

THOMAS DANE GALLERY

Michael Landy

Michael Landy's Break Down: 20 Years

Lower Level, 3 Duke Street, St. James's



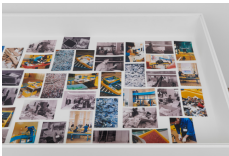
Michael Landy's Lifestyle, 1998
fluorescent sign, transformer
67 x 94 cm.
26 3/8 x 37 1/8 in.



Break Down Inventory, 2001/2016
wallpaper, film
dimensions variable



Break Down, 2001-2014
Mini DV transferred to digital video, sound
16 min 38 secs



Display table
Selection of 6x4 in. photographs by Wolfgang Tillmans, 2001



Michael Landy's Lifestyle, 1997
signed, dated recto
ink on paper
68.5 x 82 cm.
27 x 32 1/4 in.



Identification/Sorting/Separation, 1998
signed and dated recto
ink on paper
50 x 70 cm.
19 3/4 x 27 1/2 in.



The Subject of Consumption, 1999
signed and dated recto
ink on paper
137 x 101 cm.
54 x 39 3/4 in.

11 DUKE STREET, ST JAMES'S, LONDON SW1Y 6BN

TEL +44 (0)20 7925 2505 FAX +44 (0)20 7925 2506 info@thomasdane.com

THOMAS DANE GALLERY



P.D.F. (Product, Disposal, Facility), 1998
signed and dated recto
ink on paper
69 x 99.5 cm.
27 1/8 x 39 1/8 in.



Sustainable Development, 1999
signed and dated recto
pen, ink on paper
99 x 69.5 cm.
39 x 27 3/8 in.



Compulsory Obsolescence, 2002
signed and dated recto
pen, ink on paper
70 x 99.5 cm.
27 1/2 x 39 1/8 in.



*At a Routine Everyday Level,
People Don't Feel the Need to Question the Validity of
Consumerism as a Way of Life,
the Dreams That are Engendered in Consumerism Give
Meaning to People's Lives*, 2002
signed and dated recto
ink on paper
82 x 126.5 cm.
32 1/4 x 49 3/4 in.



Display table
Selection of archive material illustrating the development of
Break Down



Display table
Selection of archive material illustrating the development of
Break Down